



Welcome to  
**BPC Group**

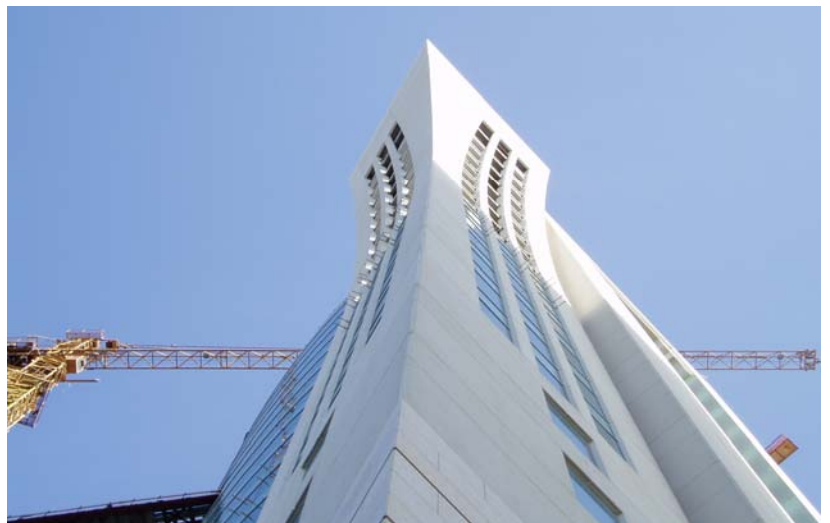
# Zamil Tower

Manama, Bahrain



One of the most challenging projects undertaken by the company in recent times is the erection of 1,667 nos. of cladding panels for the Zamil Tower. Total area of cladding panels is 10781 m<sup>2</sup>. The 22-storey landmark tower, which incorporates both traditional and modern features, is clad with 200mm thick insulated and 150mm thick insulated and solid white sandblasted panels. The tower touches a maximum height of 95.5 m and will serve as a gateway to the sub area in central Manama.

The two-tower office building is complex in plan and elevation, which has made it architecturally a demanding project requiring a traditional touch with modern features. Normally buildings taper in width as they reach their full height, but the Zamil Tower flares outwards.





Welcome to  
**BPC Group**

# Zamil Tower

Manama, Bahrain

The concave-shaped building flares outwards from the 12th floor level onwards, which means that the cladding panels have to be attached to specially design fixing arrangements. Also special are the arrangements to provide support for the window cleaning equipment near to the window, as the drop line will be about 3.5 m away from the windows at the 12th floor level.

As some of the corner panels at the top floor are above the shear walls making it impossible for proper connection, two adjacent panels have to be placed cantilevered on beams.

As the building flares outwards, a tower crane could not be used for bringing the panels into position from the 16th floor onwards.

So a special arrangement was devised to transfer the panels from the tower crane to their final position. Erection of the Panels from 12th floor level posed difficulty. As the building flares outwards, using tower crane would not bring the Panels into position. For this reason, a specially designed and fabricated mobile crane, which was able to work from inside of the building, was used. The panels were lifted from the ground by the tower crane and then placed into position by the special crane. This arrangement allowed panels to be erected on two floors at a time, after which the crane had to be shifted to continue work on other floors.



**Bahrain Precast Concrete Company W.L.L.**

P.O. Box 20095

Manama

Kingdom of Bahrain

+ (973) 17 875 600